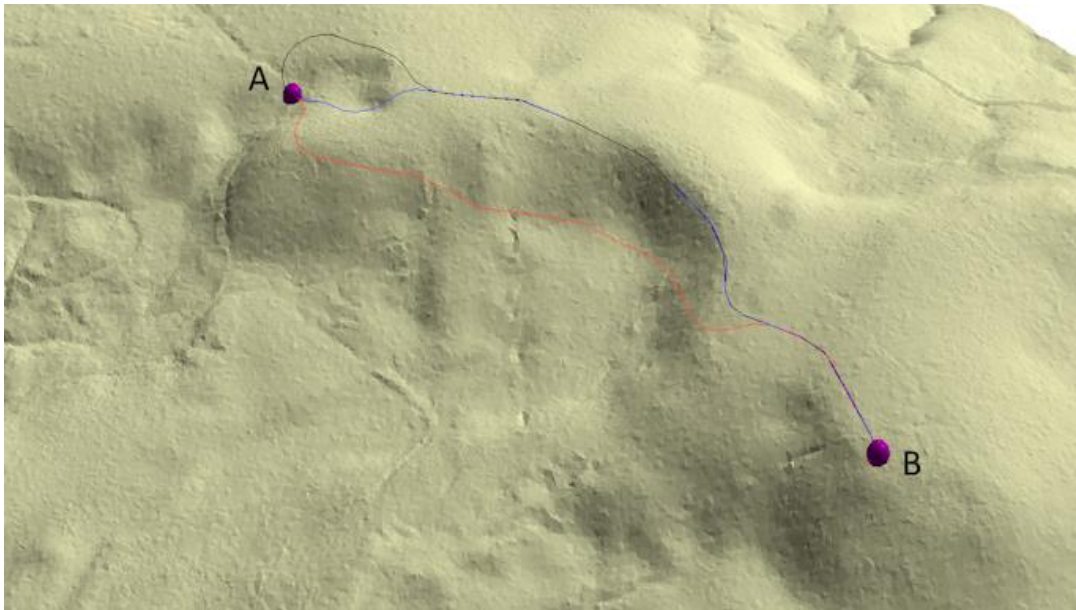


Press Release

## AI for Forest Road Planning and Design

Vancouver, BC, Canada, April 4, 2024 – Softree Technical Systems, a world leading provider of forest engineering software, has deployed a new global release of its RoadEng® Version 11 Software. This new version includes AI-based technologies to quickly find low cost, constructable road and corridor locations.



*Softree Optimal / Path Explorer AI - Tool for Exploring Alignment Options*

Research and development for Version 11 has been ongoing for over two years, guided by collaboration and dialogue with clients. “We continually engage with our customers to better understand their challenges, this helps us focus our R&D effort on features that matter to them, ultimately giving them better, faster and easier solutions.” said Matt Dickie, Applications Specialist & Training Manager Softree Technical Systems. “We are committed to empowering our customers with tools that not only streamline road design processes but also drive substantial cost savings.”

In resource industries, where rapid planning and analysis for roads are often essential, Path Explorer AI enables users to explore multiple route options from Point A to Point B within minutes, offering optimized alignment solutions while considering various constraints such as grade limits, side slopes, and environmental factors. This innovation not only accelerates decision-making but also optimizes costs.

Other Version 11 features include:

- Hydrology Enhancements
- Improvements in Lidar Processing and Corridor Design
- Automated Horizontal and Vertical Curve Generation
- Drafting and Output Improvements

For more information visit <http://www.softree.com/version-11>

**About Softree Technical Systems:**

Softree Technical Systems is a leading provider of innovative engineering software solutions, specializing in rural road design and optimization. With over 30 years of expertise, Softree Technical Systems is dedicated to revolutionizing the engineering landscape by delivering intuitive and efficient software tools tailored to the needs of modern infrastructure projects & our environment. For more information about what we do, our company philosophy, and our wide user-base, please visit [www.softree.com](http://www.softree.com).

Follow us on LinkedIn, subscribe to our YouTube Channel, and join our e-news. RoadEng, Terrain Tools and Softree Optimal are a registered trademarks of Softree Technical Systems Inc. All other company and product names mentioned herein may be trademarks of their respective owners.

**Press Contact:**

Erin Wasney  
Business Development Manager  
604-519-6222, ext. 104  
[erin@softree.com](mailto:erin@softree.com)

[End of Press Release]