

# RoadEng®

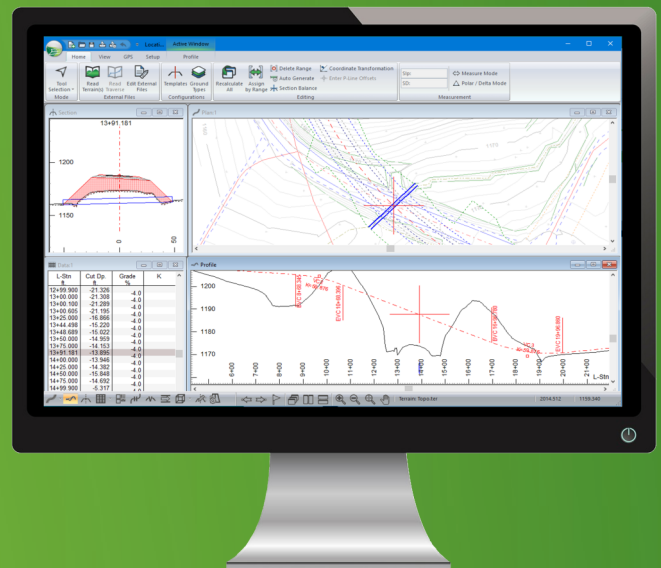
## Geometric Design Software for Rural Infrastructure Projects

New roads | Realignments |  
Widening projects | Bridge site design |  
Culvert replacements | Earthwork calculations |  
Construction cost reduction features

**Quick learning curve.** Easy to learn, easy to use. 90% of RoadEng users require no formal training. Learn on your own, and access unlimited technical support when you need it.

**Design start to finish.** Work with traditional and high-resolution survey data, including LiDAR and UAV data up to 10 million points. Create and manipulate accurate terrain models. Engineer complete road and site designs. Create PDF output sheets.

**Compatible engineering tool.** Easily share DWG, DGN, and LandXML files with other programs. RoadEng works alone, or it can integrate into other CAD or GIS-based engineering systems.



**Everything you need. Nothing more.**  
A simple user interface. Dynamic update of all windows. Customizable layouts. RoadEng is the light, fast, and intuitive design software you've been looking for.



**FAST**



**POWERFUL**



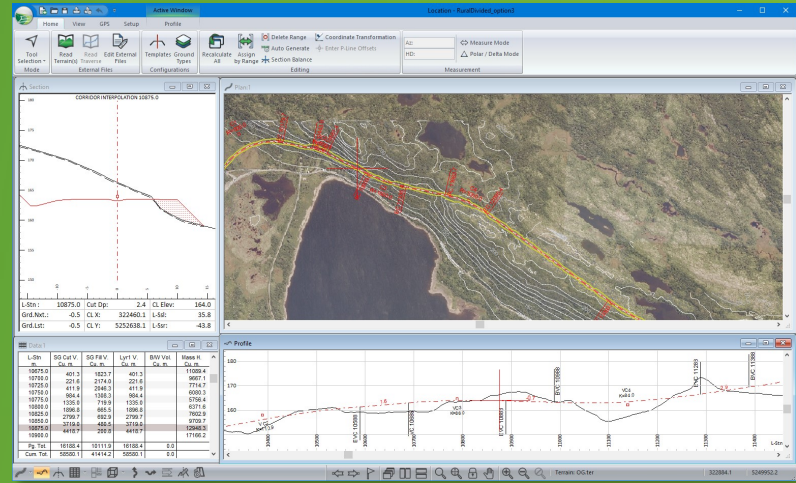
**COMPATIBLE**

# RoadEng: Built for Rural Infrastructure

## FOCUS ON ROAD DESIGN

Geometric road design in a simple and intuitive user interface. Create surfaces from a variety of survey data, including large data sets of up to 10 million points.

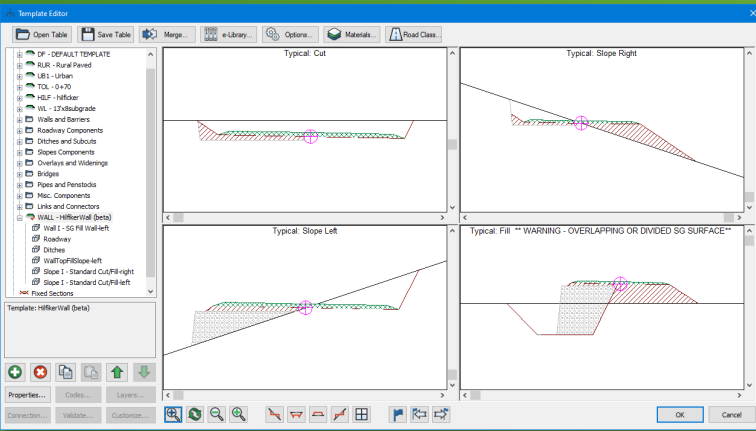
Customizable layouts. Continually monitor slope stake positions, right-of-way, grades, volumes, and mass haul in real-time as you design. Real-time interactivity means windows simultaneously update, so you'll never have to dig for your data.



## CONTROL YOUR CROSS-SECTION

RoadEng's flexible template editor allows you to assemble typical sections using a library of customizable components. Preview how template components work together and their behaviour in typical situations.

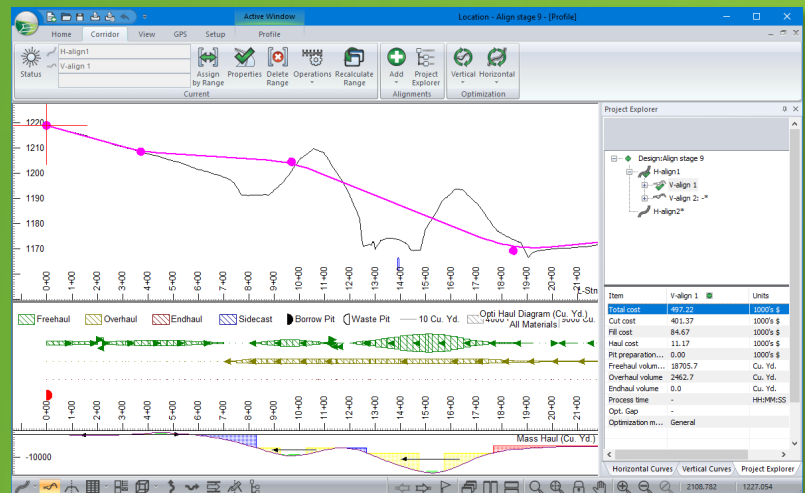
Account for ditches, pavement, sub-base materials, varying lane widths, cut slopes, variable height fill slopes, curbs, sidewalks etc.

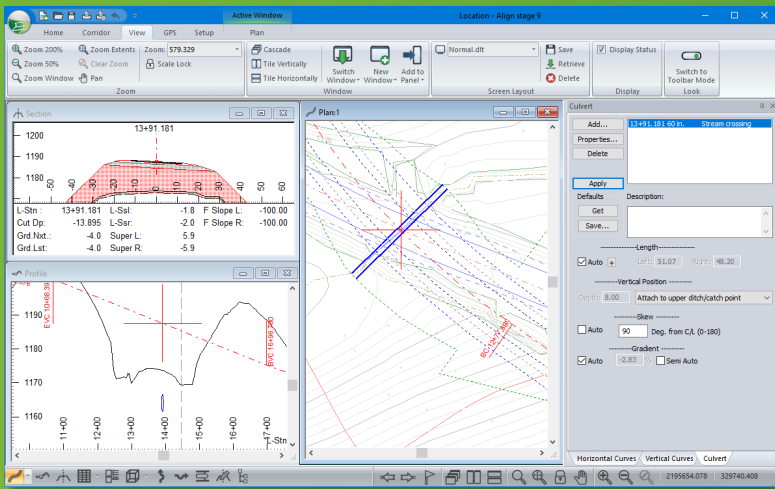


## CALCULATE YOUR COSTS

Calculate your earthwork quantities. Increase efficiency by tracking and reporting material movement and reduce construction costs. With earthwork costing data as you design, you can adjust your design based on cost. Know preliminary construction costs before you build.

Calculate as-built quantities, comparing surfaces and layers such as stripping, sub-cut, sub-grade or original ground. Print and export curves volume and area reports.



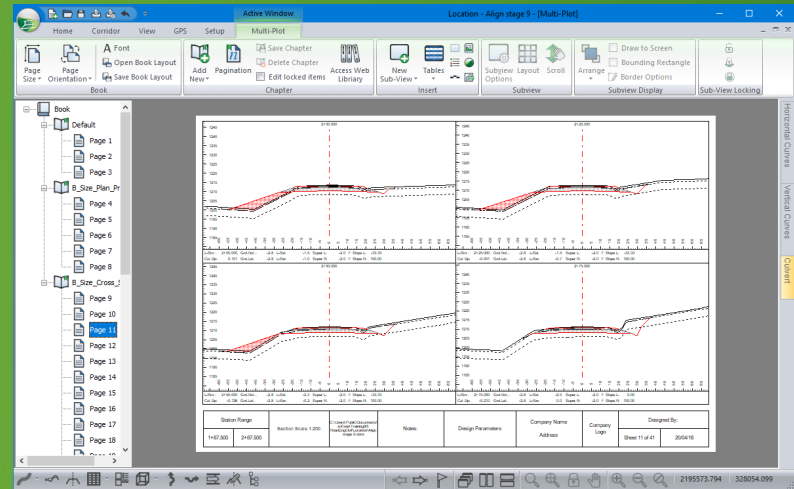


## DESIGN CULVERTS

Interactive culvert editor panel allows you to modify culvert position, diameter, type, length, skew and gradient. Add, edit and remove culverts using the culvert editor panel. Design options available for both natural stream crossings and cross drains.

## CUSTOMIZE OUTPUT

Easily share and showcase your design with Multi-Plot Report Builder. Access an e-library of design templates. Print out plan, profile, and cross-section data as one document. Simplify your presentation of deliverables with single document control.



### Reads/Writes:

- AutoCAD® DWG / DXF
- Land XML
- XYZ ASCII Points
- ESRI ArcGIS® Shape & more

### SOFTWARE REQUIREMENTS:

- Windows 7, 8, or 10 Operating System
- 2 GB system RAM (4 GB recommended)
- Min. 800 x 600 resolution (more recommended)
- Processor or motherboard built-in video is adequate
- 1 GB disk space



1,500+ COMPANIES | 5,000 USERS | 70+ COUNTRIES

Call us Toll Free at 1.866.519.6222 or 1.604.519.6222 | Email us at [sales@softree.com](mailto:sales@softree.com) | Visit us at [www.softree.com](http://www.softree.com)



SUITE 215 - 1000 ROOSEVELT CRESCENT | NORTH VANCOUVER B.C. | CANADÁ, V7P 3R4